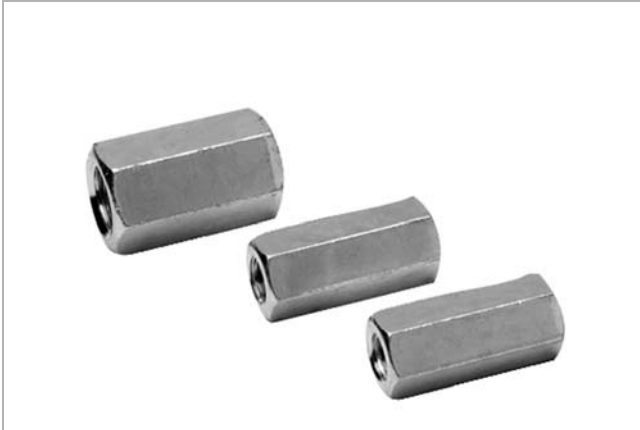
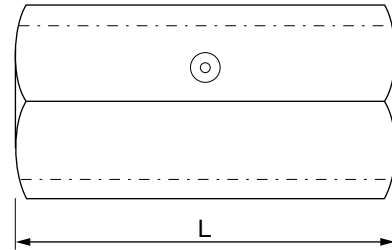


Hexagonal studding connector

OSM



Dimensions



Dim	Length mm	Material
M8	40	FZB
M10	50	FZB
M12	50	FZB
M8	40	4404
M10	50	4404

Description

Used together with threaded rod to reduce wastage to a minimum.

Threaded in both ends with a stop in the middle.

Max recommended load for different fire classes.

Installation		Ventilation system					Smoke control system
Dim	Length	R0 no fire class kg	R15 kg	R30 kg	R45 kg	R60 kg	600 °C 120 min. kg
M8	25	100	100	100	-	-	100
M8	40	100	100	100	-	-	100
M10	50	158	158	100	100	100	158
M12	50	158	158	100	100	100	158

Ordering example

